

ARGALAIR ASTRA COMPACT SERIES AIR OPERATED DOUBLE DIAPHRAGM PUMPS

STANDARD FEATURES:

- SELF PRIMING
- SUBMERSIBLE OR DRY MOUNT
- VARIABLE FLOW RATES & DISCHARGE PRESSURES
- DEAD HEAD WITHOUT DAMAGE
- RUN DRY WITHOUT DAMAGE
- HIGH SOLIDS HANDLING
- VISCOUS LIQUIDS HANDLING
- CORROSIVE LIQUIDS HANDLING
- GENTLE ON SHEAR SENSITIVE FLUIDS
- 12 MONTH WARRANTY*



PUMP MODELS:

| Model | Flow Rate (LPM) | Maximum Head (m) | Fluid Connections | Maximum Solids Size |
|----------|-----------------|------------------|-------------------|---------------------|
| DDA25-09 | 9 | 80 | 1/4+BSP | 2.5mm |
| DDA38-18 | 18 | 80 | 3/8+BSP | 3mm |
| DDA50-30 | 30 | 80 | 1/2+BSP | 3.5mm |

OPTIONS:

| | |
|--------------------|-----------------------------|
| Pump Case Material | PP, PVDF, POMC, 316SS |
| Diaphragms | Santoprene, Hytrel, PTFE |
| Balls | PTFE, 316SS |
| Ball Seats | PP, PVDF, POMC, 316SS |
| O-Rings | EPDM, Viton, NBR, PTFE |
| Hazardous Area | ATEX Zone 2 Rating Versions |

APPLICATIONS INCLUDE:

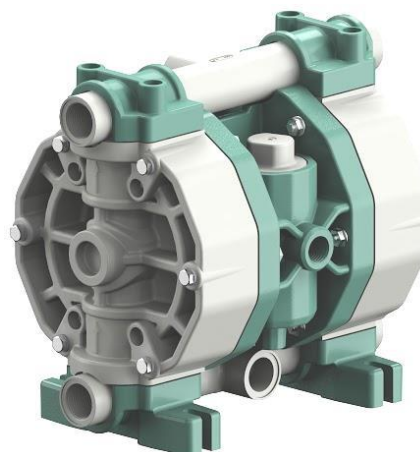
Wastewater, chemicals, oils, ink, paint, industrial washing & de-greasing, drum transfer, cleaning products, solvents, lacquers.

* Please refer to Aqua Products Limited terms and conditions of sale for complete warranty conditions.

ARGAL ASTRA SERIES AIR OPERATED DOUBLE DIAPHRAGM PUMPS

STANDARD FEATURES:

- SELF PRIMING
- SUBMERSIBLE OR DRY MOUNT
- VARIABLE FLOW RATES & DISCHARGE PRESSURES
- DEAD HEAD WITHOUT DAMAGE
- RUN DRY WITHOUT DAMAGE
- HIGH SOLIDS HANDLING
- VISCOUS LIQUIDS HANDLING
- CORROSIVE LIQUIDS HANDLING
- GENTLE ON SHEAR SENSITIVE FLUIDS
- 12 MONTH WARRANTY*



PUMP MODELS:

| Model | Max Press (m) | Max Capacity (L/min) | Connections | Solids Size (MAX) |
|-------------|---------------|----------------------|-------------|-------------------|
| DDA 50-50 | 80 | 50 | 1/2+BSP | 3.5mm |
| DDA 50-65 | 80 | 65 | 1/2+BSP | 3.5mm |
| DDA 75-100 | 80 | 100 | 1/2+BSP | 3.5mm |
| DDA 100-100 | 80 | 100 | 1+BSP | 3.5mm |
| DDA 100-160 | 80 | 160 | 1+BSP | 7.5mm |
| DDA 125-250 | 80 | 250 | 1-1/4+BSP | 7.5mm |
| DDA 150-500 | 80 | 500 | 1-1/2+BSP | 8.5mm |
| DDA 200-650 | 80 | 650 | 2+BSP | 8.5mm |

OPTIONS:

| | |
|--------------------|--------------------------------------|
| Pump Case Material | PP, PVDF, Aluminium, 316SS |
| Diaphragms | EPDM, NBR, PTFE, Santoprene, Hytrel |
| Balls | EPDM, NBR, PTFE, 316SS |
| Ball Seats | PVDF, 316SS, Aluminium, PE, PP, UPPE |
| O-Rings | EPDM, Viton, NBR, PTFE |
| Hazardous Areas | ATEX Zone 1 Rated Versions |

APPLICATIONS INCLUDE:

Wastewater, chemicals, oils, ink, paint, industrial washing & de-greasing, drum transfer, sand slurries, cleaning products, solvents, lacquers, chemical transfer, sump pump.

* Please refer to Aqua Products Limited terms and conditions of sale for complete warranty conditions.